



ORBINOX VALVES INTERNATIONAL

Parque Tecnológico de San Sebastián
Pº Mikeletegui, 71 - planta 1ª
20009 DONOSTIA-SAN SEBASTIAN, SPAIN
Tel.: + 34 943 69 80 30
Fax: + 34 943 30 92 83
e-mail: ovi@orbinox.com

EUROPE

ORBINOX S.A.
ANOETA, GIPUZKOA • SPAIN
orbinox@orbinox.com

ORBINOX UK
CHICHESTER, WEST SUSSEX • UK
uk@orbinox.com

ORBINOX COMERCIAL
BELAUNTZA, GIPUZKOA • SPAIN
comercial@orbinox.com

ORBINOX GERMANY
SCHWERTE, NRW • GERMANY
germany@orbinox.com

ORBINOX FRANCE
GENAS, REGION LYONNAISE • FRANCE
france@orbinox.com

DAMPER TECHNOLOGY
EASTWOOD, NOTTINGHAM • UK
sales@dampertechnology.com

ASIA

ORBINOX CHINA
BEIJING / SHANGHAI • CHINA
china@orbinox.com

ORBINOX INDIA
COIMBATORE, TAMIL NADU • INDIA
india@orbinox.com

DAMPER TECHNOLOGY
COIMBATORE, TAMIL NADU • INDIA
sales.india@dampertechnology.com

AMERICA

ORBINOX CANADA
LAVAL, QUEBEC • CANADA
canada@orbinox.com

ORBINOX USA
AMORY, MISSISSIPPI • USA
usa@orbinox.com

ORBINOX BRAZIL
INDAIATUBA, SÃO PAULO • BRAZIL
brasil@orbinox.com

ORBINOX CHILE
SANTIAGO • CHILE
chile@orbinox.com

ORBINOX PERU
LIMA • PERU
peru@orbinox.com

www.orbinox.com

Abrasive slurries

Technical Specifications

Sizes: **VG (SER 61)** - DN 2"/50 mm - DN 36"/900 mm (larger DN on request)
WG (SER 65) - DN 3"/80 mm - DN 36"/900 mm (larger DN on request)
HG (SER 68) - DN 3"/80 mm - DN 36"/900 mm (larger DN on request)

Working pressure: **VG (SER 61)** - DN 2"/50mm - DN 36"/900 mm 150 psi/10 bar
WG (SER 65) - DN 3"/80mm - DN 36"/900 mm 150 psi/10 bar
HG (SER 68) - DN 3"/80mm - DN 36"/900 mm 300 psi/20 bar
Other on request

Standard Flange connection: **VG (SER 61) / WG (SER 65)**
- ASME B16.5 Class 150
- ASME B16.47 Serie A Class 150
- EN 1092-2 PN 10

HG (SER 68)
- ASME B16.5 Class 150/300
- ASME B16.47 Serie A Class 150/300
- EN 1092-2 PN 16/25

Others on request

Directives: DIR 2006/42/CE (MACHINES)
DIR 2014/68/EU (PED) Fluid: Group 1(b), 2 (Cat. I, mod. A)
DIR 2014/34/EU (ATEX) Group II, Cat. 3: zones 2 and 22
(Available on request)

All ORBINOX valves are tested prior to shipping

WG (SER 65)
HG (SER 68)

Knife gate valves
for slurry service
VG (SER 61)
WG (SER 65)
HG (SER 68)



Knife gate valves for slurry service VG (SER 61) WG (SER 65) HG (SER 68)



VG (SER 61)

WG (SER 65)
HG (SER 68)

ORBINOX knife gate valves for slurry have been especially designed for highly demanding erosive, abrasive and corrosive slurry applications in industries such as mining, power plants, sand and gravel, chemical, etc. These are processes where wear is in general critical. These valves are the result of years of research, development and testing, as well as of our experience in the most demanding applications.

They are on/off, bidirectional, full bore and mono-block body

knife gate valves. These features together with the latest manufacturing processes ensure the highest standards of product quality.

The ORBINOX Group with 7 manufacturing plants and 14 sales and distribution centres worldwide, is present in more than 70 countries around the world. With over 55 years of experience in the manufacture of knife gate valves, ORBINOX is the world leader in this field.

Open position

- In the open position, the gate is fully retracted outside the bore above the sleeves.
- The sleeves are in contact and compressed against each other to seal against line pressure.
- No metal components are in contact with the slurry.
- The full bore design maximizes flow and minimizes turbulence and pressure drop.
- The seal design has no cavities where solids can accumulate. Full gate closure is assured and seat damage is prevented.

Closed position

- When closing, the gate travels between the sleeves, which then seal on either side of the gate.
- The geometry, together with the chemical composition and the vulcanization process, makes the rubber sleeves very flexible. This flexibility lowers the friction, reduces the operating torque and preserves their working life.
- The double-seated design of the valve ensures a tight shut-off in bidirectional flows.
- The closing stroke is controlled to prevent excessive sleeve compression and stress.



Seat/Sleeves

Temperature / application chart

Material	Max. Temp(°C)	Applications
Natural rubber	80	General
EPDM	120	Acids and non mineral oils low temperatures
Neoprene	90	Oils and solvents
Nitrile	100	Hydrocarbons, oils and greases

All sleeves are internally reinforced with a metal core / Other on request

Main Features

Body

- Wafer style VG (SER 61) and wide face-to-face distance WG (SER 65) / HG (SER 68) available
- The body is a single cast/fabricated part (mono-block) design and maintenance free
- The open design of the lower part of the valve allows the discharge of the slurry that has entered the body when closing or opening the valve, assuring a full gate closure. Splash guards can be optionally provided to convey this slurry media to a drain line. Flushing ports can also be added to improve the evacuation of this slurry media from the body

Gate

- Made of stainless steel, polished on both sides and of rectangular shape, the bottom of the gate is machined to an edge. These features, together with a controlled stroke, minimize friction as the gate travels through the rubber sleeves, reducing the valve operating torque and sleeve wear, ensuring optimum slurry isolation

Seat/Sleeves

- The robust design, the chemical composition and the vulcanizing process used in their production assures maximum flexibility and the absence of cavities where solids can accumulate

Packing

- The maintenance free EPDM standard gland packing for VG (SER 61)/WG (SER 65) valves is self-adjusting and prevents both leakage to the exterior and contamination of the interior of the valve in any installation position
- Conventional 100% tight packing with several layers of braided fiber and an EPDM o-ring is standard for HG (SER 68) valve and also available for VG (SER 61)/WG (SER 65) valves

Actuator

- The reinforced actuator support, manufactured in a single piece, is easily interchangeable and includes open/closed lock-outs as a standard feature for maintenance operations. It is finished with an electrostatically applied EPOXY coating
- The piston rods of pneumatically or hydraulically actuated valves include bellows (rod boots) as a standard feature to protect against outside contamination and dirt

Actuator types

Manual



Handwheel with rising stem



Bevel Gear

Automatic



Pneumatic cylinder

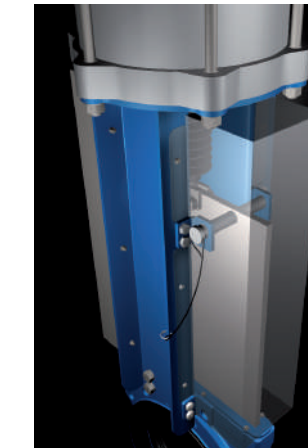


Hydraulic cylinder

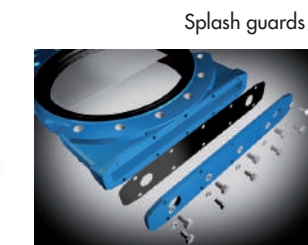


Electric actuator

One of ORBINOX's main features is that all actuators are interchangeable with each other



Detail of both the bellows for the automatic actuators and the safety locks



Splash guards

