

WAFER STYLE KNIFE GATE VALVE

The HK model knife gate is an uni-directional wafer valve designed for general industrial service applications. The design of the body and seat assures non clogging shut off on suspended solids in industries such as:

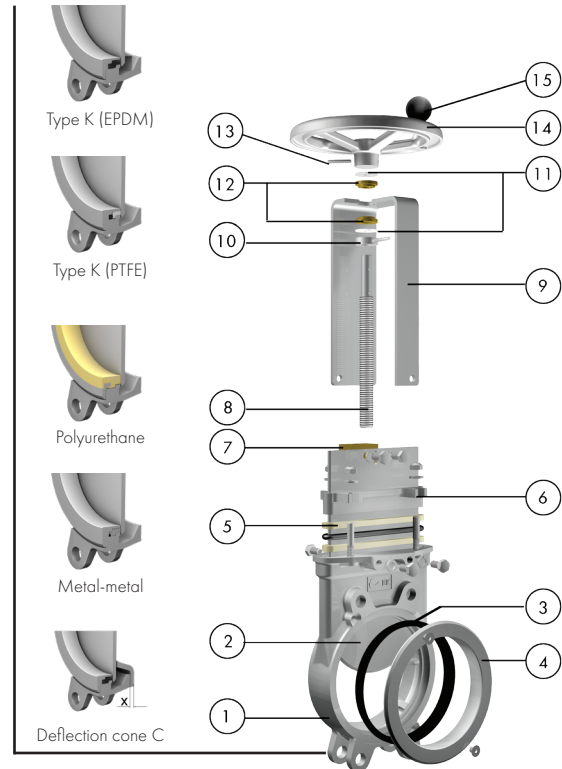
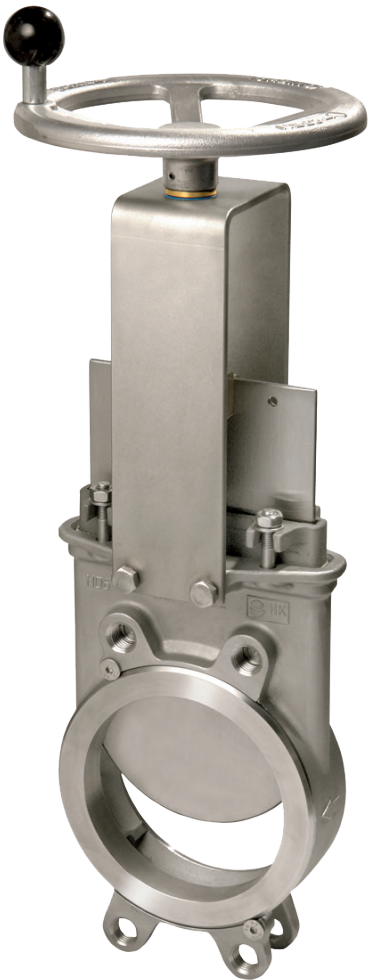
- Pulp and Paper
 - Power plants
 - Wastewater treatment plants
 - Chemical plants
- Food and Beverage
 - Bulk handling
 - Mining
 - etc.

Product description

- Uni-directional wafer type high-performance knife gate valve
- Size range of DN 150-300. See Dimension Charts for pressure rating
- Non-rising stem
- Standard flange connection: EN 1092 PN 10 and ASME B16.5 (class 150). Others upon request
- Manual (handwheel, chainwheel, lever and bevel gear), pneumatic (single and double-acting), electric and hydraulic actuation options available
- For EU Directives and other Certificates, please see the document: Directives and Certificates Compliance - Knife Gate Valves - Catalogues and Datasheets

Features

- Wafer cast monoblock body with internal cast-in gate wedges and guides for tighter shut-off
- Full port design for greater flow capacity and minimal pressure drop
- Stainless steel gate polished both sides to avoid jamming and seat damage
- Cast stainless steel seat ring, easily replaceable, that mechanically locks the seal. Standard EPDM seat, also available in other materials (PTFE,...). Metal-to-metal seat and deflection cones available
- Long-life multiple graphite impreg. PTFE/aramid yarn combination with elastomeric core, EPDM o-ring, packing with easy access and adjustable gland follower. Wide range of materials available
- RAL-5015 blue epoxy-coating on all cast iron/carbon steel components
- Automated valves provided with gate guards in accordance with EU Safety Standards
- Other options: bonnets, V-ports, flush ports, special materials, fabricated valves, etc.
- Actuation accessories: limit & proximity switches, mechanical stops, positioners, solenoid valves, manual overrides, locking devices, fail safe systems, stem extensions and floor stand



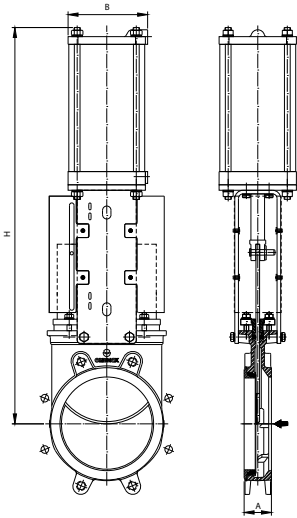
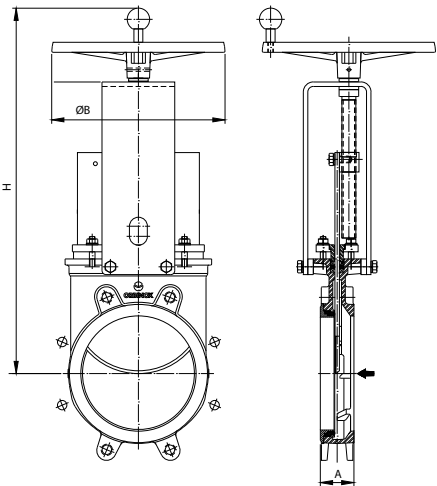
STANDARD PARTS LIST

Part		Description
1	Body	CF8M
2	Gate	AISI 316
3	Seat	EPDM
4	K ring	CF8M
5	Packing	Dynapack (Graphite impregnated PTFE and Aramid yarn combination with an elastomeric core) + EPDM O-ring
6	Gland follower	CF8M
7	Stem nut	Brass
8	Stem	Stainless Steel
9	Yoke	AISI 304
10	Axial fixing bush	AISI 304
11	Friction washer	PET + solid lubricant
12	Bushing	Bronze
13	Spring Pin	AISI 420 (ISO 8752)
14	Handwheel	Ø≤310: Aluminium (AISI 12); Ø≥410: EN-GJS400
15	Knob	Black bakelite

Handwheel Non-Rising Stem

DN	ON SEATING Pressures	OFF SEATING Pressures ¹	A	ØB	H	Weight (Kg)
150	10 bar	3, 5 bar	60	225	551	16
200	10 bar	3, 5 bar	60	310	656	29
250	10 bar	3 bar	69	310	756	43
300	10 bar	2 bar	78	310	856	62

¹ Only resilient seats



Pneumatic Cylinder

DN	ON SEATING Pressures	OFF SEATING Pressures ¹	A	B	H	Connect.	Weight (Kg)
150	10 bar	3, 5 bar	60	140	708	1/4" G	22
200	10 bar	3, 5 bar	60	175	872	1/4" G	39
250	10 bar	3 bar	69	220	1042	3/8" G	59
300	10 bar	2 bar	78	220	1192	3/8" G	79

¹ Only resilient seats

Electric Actuator

DN	ON SEATING Pressures	OFF SEATING Pressures ¹	A	C	ØB	H	D	E	F	G	Torque (Nm)
150	10 bar	3, 5 bar	60	560	160	730	265	249	72	238	20
200	10 bar	3, 5 bar	60	669	160	814	265	249	82	238	30
250	10 bar	3 bar	69	799	160	944	265	249	82	238	45
300	10 bar	2 bar	78	904	160	1044	265	249	82	238	40

¹ Only resilient seats

